

PARTAKE

Picnic Menu

SALAD

Quinoa

*chick peas, red peppers, corn, maple
chili vinaigrette by Urban Diner*

MEATS

Beef Abruzzo

Pork Cumberland Salami
by Meuwly's

CHEESE

Peppercorn Jack
by Fleur Jaune

BREAD

Country Sourdough *by Bonne Vie
Bakery*

Potato Chips *by Partake*

FRUITS & VEGETABLES

Pickled Vegetables *by Partake*

Selection of Seasonal Fruits

CONDIMENTS

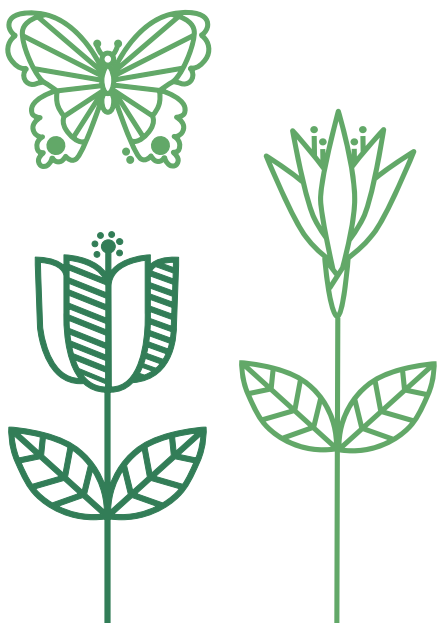
House Marmalade

Tartar Dill Dip
by Partake

SWEETS

Nanaimo Cup *w/ coconut,
graham & cocoa base, vegan custard,
rich dark chocolate
by Bloom Cookie Co.*

Menu items are subject to change



Did you know...?

- Purple cauliflower turns purple when it is under bright light and intense heat, and needs to be shaded in order to stay white!
- Strawberries are the only fruit with seeds on the outside. On average, a strawberry will have 200 seeds!
- If you eat too many carrots, your skin can turn orange from a chemical called beta carotene!
- Pickling vegetables can often make them more healthy to eat and easier to digest!
- Tomatoes have been grown in space!

Fun Things to Do at the Garden



There are some animal friends hiding in the Aga Khan Garden. See if you can find all 16 of them!
Hint... Look near water

The Koi Fish in the Japanese Garden are very friendly.
If you wiggle your hands in the water, they might come up to you!
Just be careful not to touch them, as it could hurt their delicate skin.

Insect pollinators are important for helping plants grow.
See if you can spot a Honey Bee or Butterfly visiting flowers in the Japanese or Alpine Garden.



PICNIC WORD SEARCH

S	T	M	E	E	C	A	R	R	O	T	A	E	L
I	E	T	E	A	C	H	E	E	S	E	H	M	B
H	G	A	R	D	E	N	W	E	E	E	F	O	R
A	B	E	L	L	T	O	W	E	R	C	D	O	B
B	S	S	I	D	R	Y	W	T	R	A	S	A	T
E	E	A	P	L	A	L	A	E	E	E	C	T	O
R	E	S	O	H	O	F	T	K	D	B	T	D	M
L	L	E	T	S	E	R	E	N	N	R	W	E	A
C	I	N	C	I	P	E	R	A	A	E	R	S	T
M	I	L	L	F	L	T	F	L	M	R	R	S	O
P	S	I	R	I	C	T	A	B	A	M	A	E	L
L	E	E	B	O	T	U	L	A	L	T	B	R	E
R	I	O	L	K	P	B	L	T	A	R	I	T	L
L	N	E	B	L	R	S	E	E	S	E	I	E	K

BELL TOWER
KOI FISH
CARROT
PICNIC
SALAMANDER
IRIS
GARDEN
WATERFALL
BLANKET
DESSERT
ROSE
BUTTERFLY
BEE
CHEESE
TOMATO